



YSP- SCIENTIFIC SOLUTION

Laboratory Products | Instruments | Furniture | Equipment | Chemical | Glassware | CRM

The refers to educational, informational, or promotional material related to the field of pharmacy, including topics such as medication, pharmaceutical science, pharmacy practice, patient care, and drug information.



yspscientific@gmail.com



+91 73387 21875
+91 96262 97366

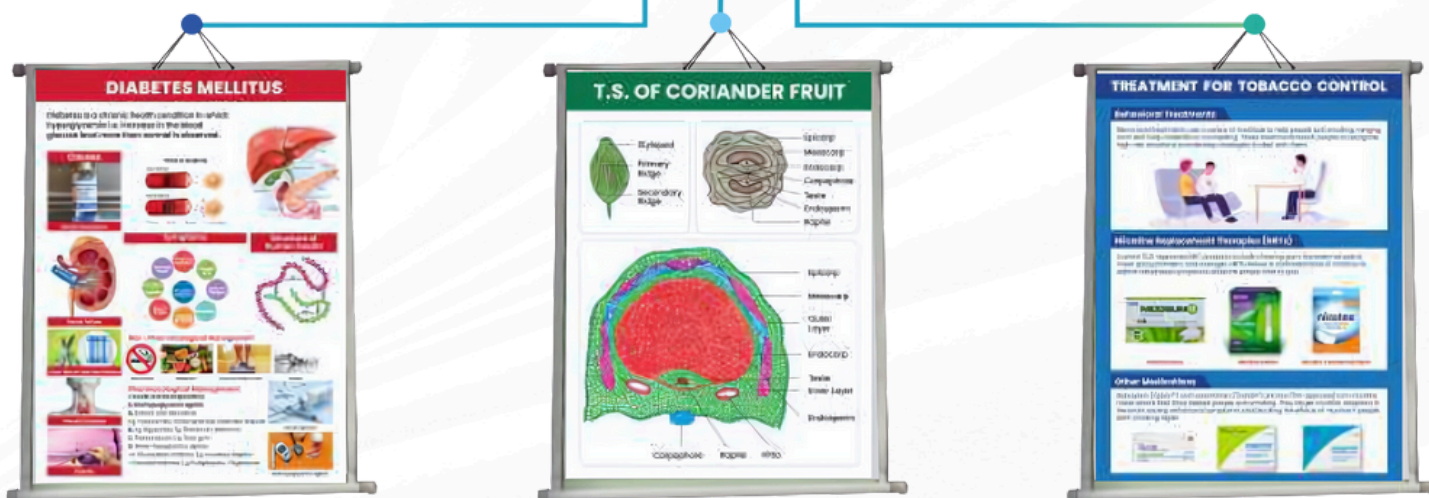
We YSP- SCIENTIFIC SOLUTION, Chennai are a trusted brand in lab equipment, apparatus, glassware, Crude drugs, Phytoconstituents, consumables and lab supplies. We also assist in Pharmacy Lab & Museum development across India. We are really happy to present Pharmacy Laboratory Charts for D. Pharm and B. Pharm Institutes as per the Pharmacy Council of India (PCI) syllabus.

The charts aim at familiarizing students with the subject in a simple and concise way. The students will be able to easily understand the subject matter and how it can be best used for the benefit of mankind. Using the latest printing technology, the charts are printed on Imported Star Flex Matt Finished Print in full colors and are fitted with PVC pipe and cap. The display size of the chart is 30 * 40 inches.

FEATURES

- Adhering to the PCI syllabus
- Designed by Experts
- Superior Finishing
- Premium Quality Material Used
- Durable

Sample Display of Charts



Terms and conditions

For Queries, Quotation & Order

Freight: For destination Delivery: Within 8 to 10 working days
 Payment: 100 % advance along with PO
 Shipping extra at actual

YSP SCIENTIFIC SOLUTIONS
 +91 96262 97366
 +91 73387 21875

Code No	Name of the Chart
Pharmacognosy (27)	
PG 1	Morphology of Ispaghula Seeds
PG 2	Morphology of Senna Leaves
PG 3	Morphology of Coriander Fruits
PG 4	Morphology of Fennel Fruits
PG 5	Morphology of Cardamom Fruits
PG 6	Morphology of Ginger Rhizomes
PG 7	Morphology of Nutmeg Seeds
PG 8	Morphology of Black Pepper Fruits
PG 9	Morphology of Cinnamon Bark
PG 10	Morphology of Clove Bud
PG 11	Morphology of Ephedra Stem
PG 12	Morphology of Rauwolfia Roots
PG 13	Morphology of Gokhru Fruits
PG 14	Morphology of Punarnava Herb
PG 15	Morphology of Cinchona Bark
PG 16	Morphology of Agar Powder
PG 17	T.S. of Coriander Fruit
PG 18	T.S. of Ajwain Seed
PG 19	T.S. of Cinchona Bark
PG 20	T.S. of Cinnamon Bark
PG 21	T.S. of Vasaka Leaf
PG 22	T.S. of Datura Leaf
PG 23	T.S. of Ashwagandha Root
PG 24	T.S. of Liquorice Root
PG 25	T.S. of Curcuma Rhizome
PG 26	T.S. of Nux Vomica Seed
PG 27	T.S. of Clove Bud
Social Pharmacy Charts (6)	
SP 28	Treatment for Tobacco Control
SP 29	Tobacco Containing Products
SP 30	Glycemic Index of Food
SP 31	Nutrition
SP 32	Role of Pharmacist in Reproductive Health
SP 33	Body Mass Index (BMI)
Pharmacotherapeutics (11)	
PT 34	Hyper Lipidemia
PT 35	Rheumatoid Arthritis
PT 36	Angina Pectoris
PT 37	Myocardial Infarction
PT 38	Hypertension
PT 39	Asthma
PT 40	Chronic Obstructive Pulmonary Disease (COPD)
PT 41	Diabetes
PT 42	Epilepsy

Code No	Name of the Chart
Pharmacotherapeutics (11) continued	
PT 43	Stroke
PT 44	Tuberculosis
Biochemistry and Clinical Pathology (10)	
BC 45	Overview of Carbohydrates
BC 46	Overview of Amino Acids
BC 47	Overview of Proteins
BC 48	Overview of Lipids
BC 49	Enzymes
BC 50	Nucleic Acid
BC 51	Glycolysis, gluconeogenesis & Electron Transport Chain
BC 52	Krebs Cycle
BC 53	Urea Cycle
BC 54	Beta Oxidation of Fatty Acid
Pharmaceutics (6)	
PH 55	Classification of Dosage Forms
PH 56	Types of Tablets
PH 57	Manufacturing of Tablets
PH 58	Manufacturing of Capsules
PH 59	Unit Operations
PH 60	Quality Control Tests for Tablets
Human Anatomy and Physiology (16)	
AP 61	Human Heart (Anatomy)
AP 62	Human Heart – Circulatory system
AP 63	Respiratory System
AP 64	Digestive System – GI Tract
AP 65	Digestive System – Accessory Organs
AP 66	Animal Cell Organelles
AP 67	Human Blood Groups
AP 68	Urinary System
AP 69	Endocrine System
AP 70	Male Reproductive System
AP 71	Female Reproductive System
AP 72	Central Nervous System
AP 73	Peripheral Nervous System
AP 74	Human Eye
AP 75	Human Ear
AP 76	Human Skin
Pharmaceutical Chemistry (5)	
PC 77	Heterocyclic Rings (Single Ring Structures)
PC 78	Heterocyclic Rings (Fused Ring Structures)
PC 79	Organic Groups
PC 80	Systematic Qualitative Analysis
PC 81	Periodic Table of the Elements
All the labs (1)	
GN 82	Lab Safety Rules



PG 1

Morphology of Ispaghula seeds



PG 2

Morphology of Senna Leaves



PG 3

Morphology of Coriander Fruits



PG 4

Morphology of Fennel Fruits



PG 5

Morphology of Cardamom Fruits



PG 6

Morphology of Ginger Rhizomes



PG 7

Morphology of Nutmeg Seeds



PG 8

Morphology of Black Pepper Fruits



PG 9

Morphology of Cinnamon Bark



PG 10

Morphology of Clove Bud



PG 11

Morphology of Ephedra Stem



PG 12

Morphology of Rauwolfia Roots



PG 13

Morphology of Clove Bud



PG 14

Morphology of Punarnava Herb



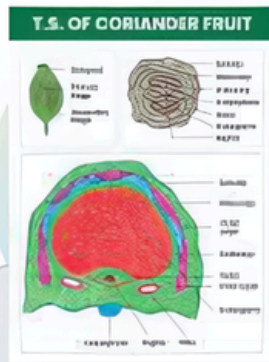
PG 15

Morphology of Cinchona Bark



PG 16

Morphology of Agar Powder



PG 17

T.S. of Coriander Fruit



PG 18

T.S. of Ajwain Seed



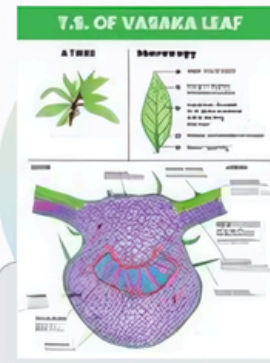
PG 19

T.S. of Cinchona Bark



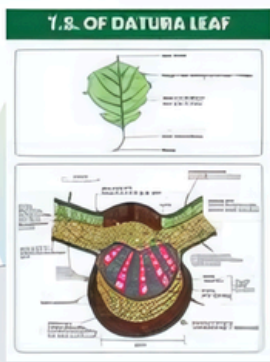
PG 20

T.S. of Cinnamon Bark



PG 21

T.S. of Vasaka Leaf



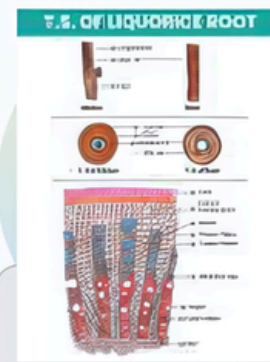
PG 22

T.S. of Datura Leaf



PG 23

T.S. of Ashwagandha Root



PG 24

T.S. of Liquorice Root

T.S. OF CURCUMA RHIZOME



PG 25

T.S. of Curcuma Rhizome

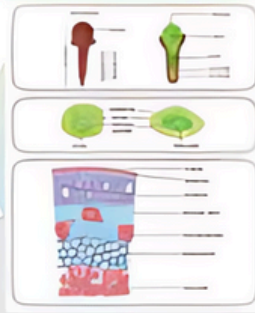
T.S. OF NUX VOMICA SEED



PG 26

T.S. of Nux Vomica Seed

T.S. OF CLOVE BUD



PG 27

T.S. of Clove Bud



SP 28

Treatment for Tobacco Control



SP 29

Tobacco Containing Products



SP 30

Glycemic Index of Food



SP 31

Nutrition



SP 32

Role of Pharmacist in Reproductive Health



SP 33

Body Mass Index (BMI)



PT 34

Hyper Lipidemia



PT 35

Rheumatoid Arthritis



PT 36

Angina Pectoris



PT
37

Hyper Lipidemia



PT
38

Hypertension



PT
39

Asthma



PT
40

Chronic Obstructive
Pulmonary Disease (COPD)



PT
41

Diabetes



PT
42

Epilepsy



PT
43

Stroke



PT
44

Tuberculosis



BC
45

Overview of
Carbohydrates



BC
46

Overview of Amino
Acids



BC
47

Overview of
Proteins



BC
48

Overview of Lipids



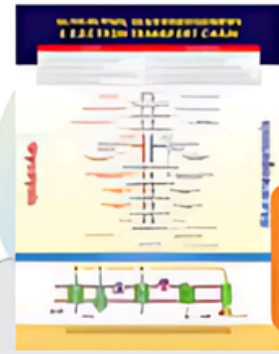
BC
49

Enzymes



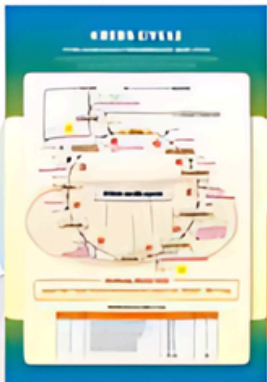
BC
50

Nucleic Acid



BC
51

Glycolysis,
Gluconeogenesis &
Electron Transport Chain



BC
52

Krebs Cycle



BC
53

Urea Cycle



BC
54

Beta Oxidation of
Fatty Acid



PH
55

Classification of
Dosage Forms



PH
56

Types of Tablets



PH
57

Manufacturing
of Tablets



PH
58

Manufacturing
of Capsules



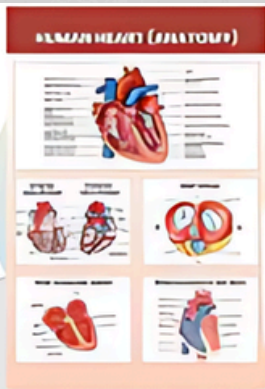
PH
59

Unit Operations



PH
60

Quality Control
Tests for Tablets



Human Heart (Anatomy)



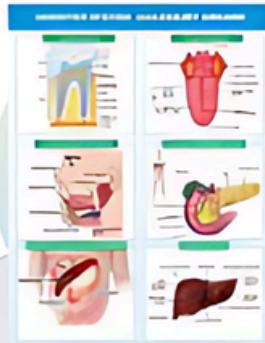
Human Heart - Circulatory system



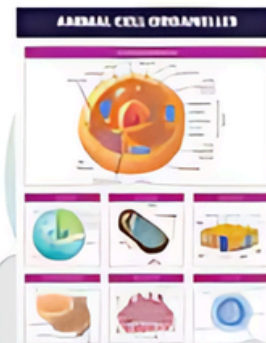
Respiratory System



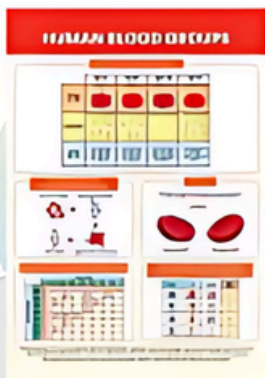
Digestive System GI Tract



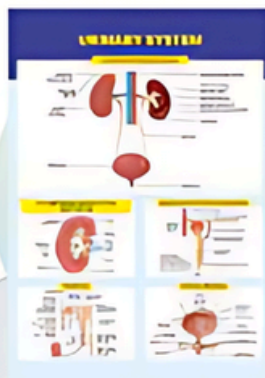
Digestive System - Accessory Organs



Animal Cell Organelles



Human Blood Groups



Urinary System



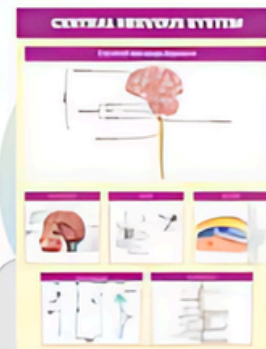
Endocrine System



Male Reproductive System



Female Reproductive System



Central Nervous System



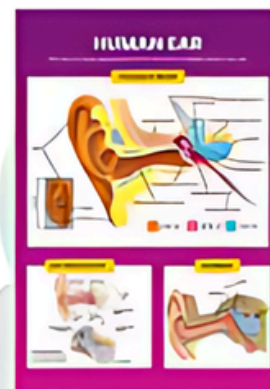
AP
73

Peripheral Nervous System



AP
74

Human Eye



AP
75

Human Ear



AP
76

Human Skin



PC
77

Heterocyclic Rings
(single ring structures)



PC
78

Heterocyclic Rings
(Fused ring structures)



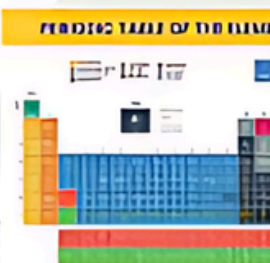
PC
79

Organic Group



PC
80

Systematic Qualitative Analysis



PC
81

Periodic Table of the Elements



GN
82

Lab Safety Rules

Greetings from Kirti Enterprises, Pune.

As per **AICTE and PCI mandate**, pharmacy museum is an essential requirement. We at **Kirti Enterprises, Pune** help you with the setup of the pharmacy museum. We supply posters and coloured backgrounds for the museum. The material can be customized as per area specification along with the college name and logo. This attractive museum will be surely beneficial for getting **NBA and NAAC** accreditation. Kindly find list of posters and background readily available.

Pharma museum Posters and background	
1	Mission and vision of the Institute
2	List of Pos
3	Pharmacist's Oath
a	I am Pharmacist poem
4	Welcome background with DhanvantariStotra
5	History of medicine and pharmacy
6	Pharmacy Scientist and their contribution
7	Pharmaceutics
a	Galaxy of dosage forms (Solid, liquid, semisolid, parenteral)
b	Cosmetics
c	Novel drug delivery system
d	Unit operations
e	Manufacturing of tablets and capsules
f	Medical devices
8	Pharmaceutical chemistry
a	Drug discovery and development
b	Unit process in pharmaceutical organic chemistry
9	Pharmacology
a	Various systems, disorders, treatments and biological evaluation methods
b	Pharmacological classification of drugs
10	Pharmacognosy
a	Herbal crude drugs (50 Posters)
b	Valuable Phytoconstituents
c	Extraction method
d	Health from Herbs (20 posters)
11	Pharmaceutical analysis at a glance
12	Miniature Glassware with coloured background (We have separate list)

The tabled background designs can be printed in

Available Materials
U V Vinyl print
3 mm Foam with UV print
5 mm Foam with UV print 10 mm Foam with 2 mm acrylic sheet 3 mm clear acrylic reverse printing
C lip on boards with light (6 Months warranty for bulb)
Matt Canvas print with MDF frame

Terms and conditions:

1. 100% advanced payment.
2. No warranty for electronic boards.
3. Delivery and fitting charges at actual.

LIST OF CRUDE DRUGS, FIBERS, OILS AVAILABLE

Available in pack size of 250gms, 500gms and 1 kg

Crude Drugs	Crude Drugs	Crude Drugs	Crude Drugs
Acacia*	Dioscorea*	Orange peel*	Vinca leaves*
Aconite*	Ephedra*	Palash seed*	White Mustard*
Agar ^s	Fennel*	Pectin ^s	Yeast+
Ajowan*	Fenugreek*	Phloroglucinol (10 g) ^s	Wool fat+
Aloe*	Agar ^s Gaduchi (Tinospora)*	Picrorrhiza*	FIBERS
Aloe vera gel ^s	Galangal*	Piper longum fruit*	Asbestos ^s
Amla*	Greater Galangal*	Podophyllum*	Glasswool ^s
Ammi visnaga*	Galls*	Pterocarpus*	Cotton*
Amomum*	Gelatin ^s	Punarnava*	Jute*
Anise*	Gentian*	Pyrethrum*	Nylon
Apamarg*	Ginger*	Quassia*	Polyester
Areca*	Ginseng*	Rauwolfia*	Rayon
A rjuna*	Gokhru bara*	Rhubarb*	Silk(100g)*
A safoetida*	Gokhru chota*	Ritha*	Wool(100g)*
A shoka bark*	Guar Gum ^s	Rosemary leaves*	FIXED OILS
A shwagandha*	Guggul ^s	Ruthunium Red ^s	Almond oil*
B ael*	Gurmar*	Saffron(per gram)*	Arachis oil*
B avchi (Psoralea)*	Henna*	Sandalwood*	Argan oil*
Beeswax ^s	Herde (Myrobalan)*	Santonica*	Castor oil*
Behera*	Honey*	Saussurea*	Chaulmoogra oil*
Bentonite*	Hyoscyamus seed*	Senna leaf*	Coconut oil*
Benzoin Sumatra ^s	Hyoscyamus herb*	Senna pod*	Karanja oil*
Benzoin Siam ^s	Ipecacisabgol seed*	Sesame*	Linseed oil*
Berberis*	Isabgol husk*	Shankpushpi*	Mustard oil*
Bhilava*	Jalap*	Shatavari*	Neem oil*
Black Pepper*	Jalap Indian*	Shellac*	Olive oil*
Brahmi (Centella)*	Jatamansi*	Shikakai*	Rice bran oil*
Calamus (Vaj)*	Kachnar*	Shilajit ^s	Sesame oil*
Calumba*	Kaladana*	Shirish*	Cod liver oil+
Caraway*	Kalijiri*	Sodium alginate ^s	Grape seed oil ^s
Cardamom*	Kalmegh*	Soft Soap ^s	Jobba oil ^s
Carnauba wax ^s	Kamala*	Squill*	Vitamin E oil ^s
Cascara*	Kantakari*	Star anise*	Coriander oil
Castor seed*	Kaolin*	Starch Maize+	ESSENTIAL OILS
Cassia Cinnamon*	Kieselguhr*	Starch Potato+	Basil oil
Ceylon Cinnamon*	Kino*	Starch Rice+	Cedarwood oil
Catechu Black ^s	Kokum Butter*	Starch Wheat+	Cinnamon oil
Catechu Pale ^s	Kurchi bark*	Storax ^s	Clove oil
Chakramadhu*	Licorice*	Stramonium seeds*	Eucalyptus oil
Chirata*	Linseed*	Strychnos potatorum*	Jasmine oil
Chitrak laal (Plumbago)*	Lobelia*	Talc*	Lavender oil
Chinchona bark*	Lycopodium spores*	Talispatra*	Lemon oil
Clive*	Mace*	Thymol ^s	Lemongrass oil
Cocoa butter ^s	Male Fern Rhizome*	Thyme leaf*	Orange oil
Coffee seed*	Malkangni*	Tobacco*	Patchouli oil
Colchicum Corm*	Manjistha (Rubia)*	Tragacanth Indian*	Peppermint oil
Colocynth*	Menthol ^s	Tulsi*	Rose oil ^s
Coriander*	Myrrh*	Turmeric*	Rosemary oil
Culophony ^s	Nagarmotha*	Valerian*	Tea Tree oil
Cummin*	Neem leaf*	Vanillin ^s	Thyme oil ^s
Datura seed*	Neem seed*	Vasaka herb*	Turpentine oil
Digitalis*	Nutmeg*	Vetiver root*	Ylang ylang oil
Dill Indian*	Nux Vomica*	Vidang*	

Powdered Crude drugs for microscopic studies

above mentioned crude drugs can also be supplied in powdered form at an additional cost of 15 %.

PHYTOCHEMICALS

Phytochemicals	Phytochemicals	Phytochemicals K	Phytochemicals
α Asarone	Coumarin	aempferol	R abaudioside
1 ODAB III	Creatine monohydrate	Karanjin	Reserpine
16 DPA	Cubebin		Resveratrol
3-Methoxyflavone	Curcumin	Khellin	Rhein
5-Methoxy flavone	Curcuminoids	Lawson	R osmarinic acid
7-Methoxyflavone	Daidzein	L -DOPA	Rutin
Abietic acid	Diacerein	L-Isoleucine	Salicin
Aescine (Escin)	Digoxin	Lobeline Hcl	Salvianolic acid B
Ajmaline	Dihydromyricetin	L-Phenylalanine	Santonin
Allicin	Diosgenin	L-Theanine	Scopoletin
Aloe emodin	Diosmetin	Lupeol Lutein ester	Sesamin
α -Mangostin	D iosmin	L uteolin	Sesamol
A mygdalin	E cdysterone	L -Valine	Shikimic acid
Andrographolide	Ellagic acid	Lycopene	Silybin Silymarin S
A nthrone	E mbelin	M agnolol	odium Hyaluronate
A pigenin	E modin	M angiferin	
Arbutin	Epigallocatechin gallate (EGCG)	Methoxsalen (Xanthotoxin)	Steveoside
Artemisinin	Ergosterol	Methyl Hesperidine	Stigmasterol
Astragaloside IV	Esculetin	Monoammonium Glycyrrhizinate Morin hydraten	Strychnine So4
Atropine sulphate	Esculin (Aesculin) E ugenol	M yricetin	Tanshinone II A
B aicalin	Ferulic acid	Naringenin	Taxifolin
Barbaloin	Fisetin	Naringin	Thaumatococin
Berberine Hcl	Flavokawain A	Neohesperidin	Thymoquinone
Bergapten	F ormononetin F	N icotine Tartarate	Trigonelline Hcl
B ergenin	orskolin	N oscapine Hcl	T rimyristin
B eta-Carotene Beta-	Gallic acid	Oleanolic acid	T roxerutin
Nicotinamide Mononucleotide	Genistein G entisic acid	Oryzanol P aeoniflorin	Umbelliferone
Beta-Sitosterol	G lycyrrhetic acid	P aeonol Papaverin Hcl	Usnic acid
B etulin	Glycyrrhizin	P hlorizin	Vanillic acid
B etulinic acid	G melinol Gramine	Phytol	Vasicine
Bisdemethoxy curcumin	Guggulsterone-Z	Phytosterol	Vilangin
B rucine	Hecogenin	Piperic acid	Vitamin B12
Caffeic acid	H ematoxylin hydrate	P iperine	Yohimbine Hcl
Caffeine	H ermaline	P iperonylic acid	Zingerone
Calcium sennoside	H esperetin	P lumbagin	
C amptothecin	Hesperidin	Protocatechuic Acid	
C apsaicin	Honokiol	Psoralen	
C atechin	Hordenine	Pterostilbene	
Chlorogenic acid	Inositol	Quercetin	
Cholesterol	Isoliquiritigenin	Quinidine Sulphate	
Chrysin	u glone	Q uinine sulphate	
Colchicine			
Conessine			
C oumaric acid			

TERMS & CONDITIONS

Supplies

Herbs/Botanicals/crude drugs/phytoconstituents, charts, etc. can be supplied in our pack sizes, however the total order should be of minimum Rupees 2,500/-. All items are subject to the availability and government regulations. These products being of natural origin we cannot guarantee to supply. Kindly check availability at the time of placing order. All prices quoted are applicable subject to reconfirmation at the time of placing the order. We reserve the right to discontinue marketing any item without notice and invoice goods at prices ruling at the time of dispatch

Taxes

GST extra as applicable as per the category published by Govt. of India. Items marked with different symbols will have GST rates shown in front of them : *5 % GST + 12 % GST; § 18 % GST, Any discrepancy regarding GST filings to be notified within 30 days of invoice date.

Free Delivery

Goods will be dispatched within 7 days after receiving confirmed order, by India Post Parcel or private courier with charges paid. Where value of goods is less than Rupees 2,500/- packing & forwarding will be charged extra. We do not guarantee when you will receive your item as that is controlled by the courier service. Our responsibility ceases immediately after goods leave our premises

Validity

This cancels all our earlier price-lists. Validity of this price-list - One month after which we reserve the right to increase the price to cover up increase in cost.

Jurisdiction

All disputes will be subject to Chennai JURISDICTION ONLY.

Bank Details

IDFC BANK

BRANCH OFFICE : NUNGAMBAKKAM

Ac/No: 10022925132

IFSC Code: IDFB0080102

ICICI BANK

BRANCH OFFICE: SITHALAPAKKAM

Ac/No: 270605500149

IFSC Code: ICIC0002706



Scan to Pay UPI App



UPI ID: pazhanit84@oksbi



+91 96262 97366
+91 73387 21875



yspscientific@gmail.com
sales.yspscientific@gmail.com



B: 25 G1, Ground Floor, #7/10
Annai Avanthika Vengaivasal,
Chennai - 600100